

### WHO WE ARE:

Executive Women in Healthcare is a professional development and networking group for women in the healthcare industry in the Greater Indianapolis area. The purpose of our organization is to provide educational opportunities and leadership opportunities for our members to become agents of change for Indiana's health care industry and to learn from one another to build a comprehensive understanding of the industry.

### OUR MEMBERS:

Our members work at all levels in the health care industry including hospitals, clinics, medical practices, healthcare related businesses, healthcare provider associations, physicians, attorneys, consultants and CPAs.

### MEMBERSHIP BENEFITS:

#### Networking

EWHC events are a great way to meet other women in health-related professions, develop new business contacts, network with peers, and expand professional and personal resources.

#### Professional Development

EWHC programs provide insight for EWHC members into trends in healthcare from legal, governmental, business, social, cultural and other perspectives.

#### Leadership

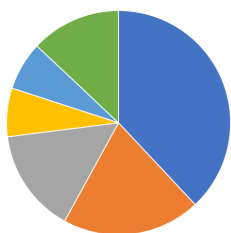
EWHC fosters an environment that recognizes and supports leadership and services by women leaders in health care and encourages leadership through board, committee and mentoring opportunities.

#### Value

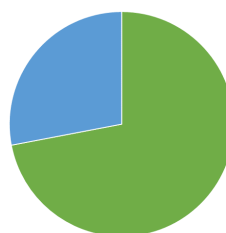
EWHC members enjoy a discounted rate to attend all events. Members also have access to our online Member Directory.

#### Community

EWHC is one of the largest professional women's associations in Indianapolis and promotes community involvement by our members.



**EWHC Membership Mix:**  
 Hospital/Provider/Facilities - 38%  
 Professional Services - 20%  
 Education/Students - 15%  
 Consulting - 7%  
 Vendor - 7%  
 Other - 13%



**EWHC Membership Titles:**  
 C-level, partner, principal, VP, director - 72%  
 Mid-Level, developing leaders - 28%

### MEMBERSHIP LEVELS

- Student Membership: \$75
- Individual Membership: \$135
- Small Corporate Membership (up to 10 members): \$1,200
- Medium Corporate Membership (11-15 members): \$1,500
- Large Corporate Membership (16-20 members)\*: \$1,700  
\*additional members over 20 are \$85 each

### WHAT OUR MEMBERS HAVE TO SAY ABOUT EWHC!



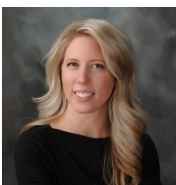
*"The networking and educational opportunities offered by EWHC have been invaluable. I can't think of a better way to truly get to know other females in our growing healthcare community."*  
Colleen Powers, Shareholder, Hall Render Killian Heath & Lyman



*"EWHC has been an excellent way to meet other professional women to share experience and knowledge. The events keep you updated with current relevant topics in various fields of business. As President and CEO of Fairbanks, being a sponsor organization also allows us an opportunity to share our mission with the community. EWHC is truly committed to assisting women in their careers."*  
Barb Elliott, Retired President and CEO, Fairbanks Hospital



*"EWHC is a welcoming community of wonderful women who lift one another up and support your individuality, professional development, and personal priorities. The variety of events offered allows you the opportunity to choose to participate in those things that you are interested in and/or want to expand your horizons on."* Tammy Chad, Compliance Program Manager, IU Health Plans



*"EWHC has been an invaluable resource for me, both personally and professionally. The passion and commitment of EWHC members to help other women achieve their goals, is unmatched in any other organization I have been a part of."* Kiley Wanecke, Sr. Acct. Executive, IU Health

### READY TO JOIN?

Please apply online at [www.ewhc.org](http://www.ewhc.org). If you have questions, please contact: Joelle Compton, Executive Director at 317.339.3495 OR [executivewomeninhealthcare@gmail.com](mailto:executivewomeninhealthcare@gmail.com)